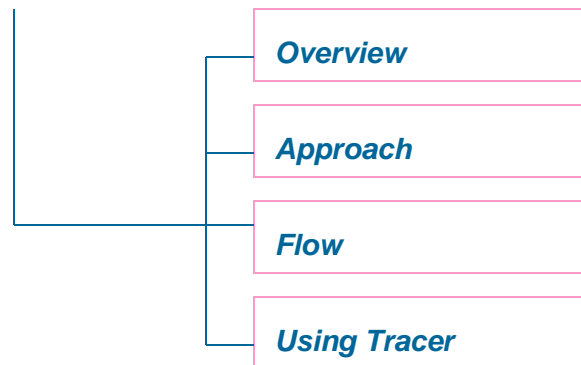


REGRESSION TESTING APPROACH



INTRODUCTION

Software Testing

Testing is not just finding out the defects. Testing is not just seeing the requirements are satisfied. Testing is a process of verifying and validating all wanted requirements are there in products and also verifying and validating any unwanted requirements are there in the products. It is also seeing any latent effects are there in the product because of these requirements.

Testing is not just a phase in SDLC, but it is to be addressed in all phases.

Load testing is not just to determine response time and throughput of the application under load it is to determine the risk factors associated with increasing the load on the application. It also to determine the performance behavior of the system under load requirements. It is also to evaluate the compliance of a system or component with specified load requirements.

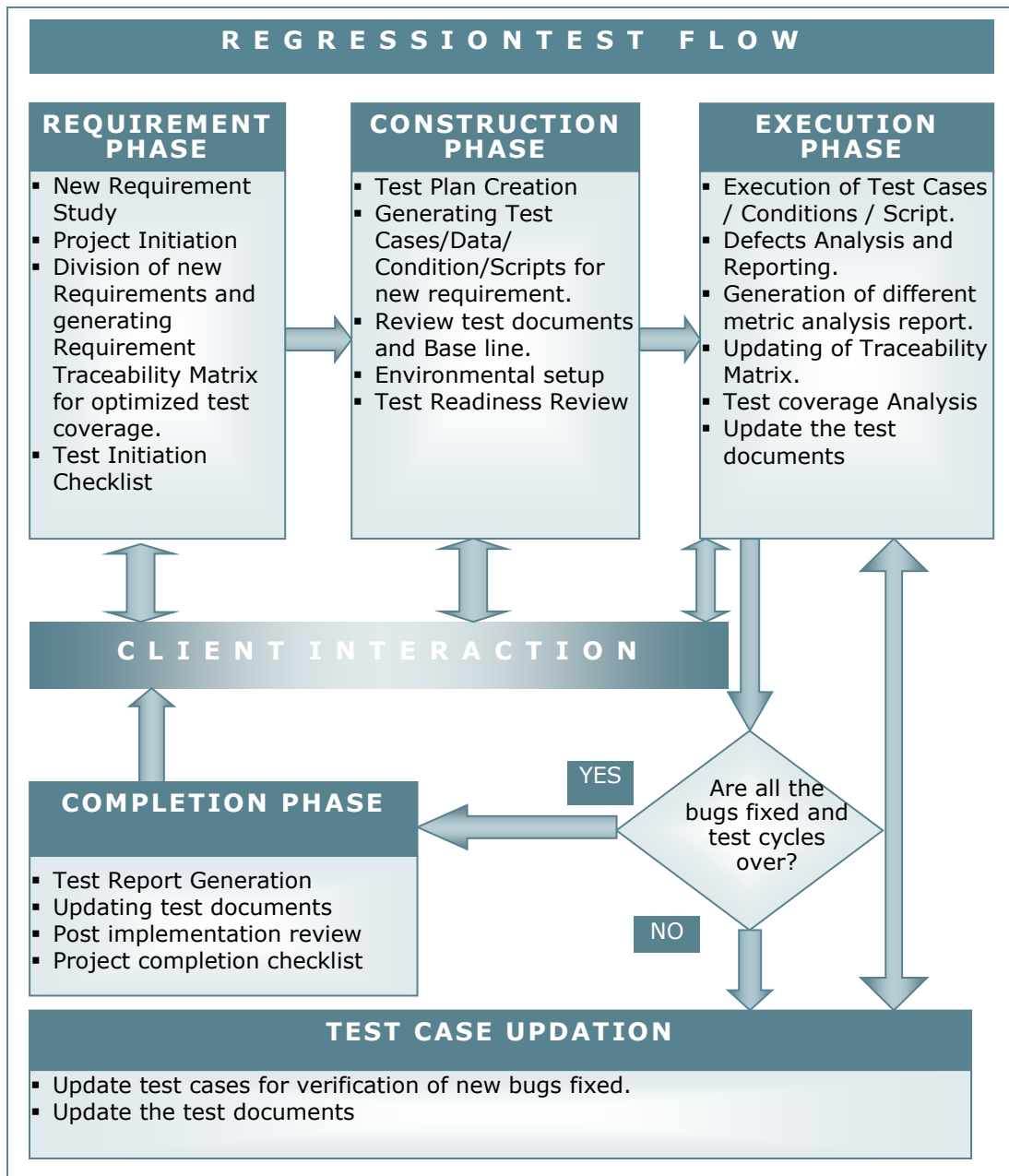
TRACE APPROACH

TRACE provides an integrated complete end-to-end load testing solution to its customers with its defined methodology and in-house testing tools. A well-defined end-to-end metric based process with proper entry and exit criteria focusing on the entire aspects of load testing is followed at TRACE.

The approach for functional testing is based 4 simple steps

- Requirements Phase
- Planning / Construction Phase
- Execution Phase
- End Phase

REGRESSION TESTING FLOW



Using Tracer

How to perform Regression testing using Tracer

Property of each control in the win32 application can be obtained using TraceIt spy control. Using these properties, the script can be written and executed to automate the application whose control's properties were obtained. After execution, the result can be analyzed using the screenshot and output excel file.

About TRACE

Trace Technologies, is a Software Testing Company, serving Software companies

- **To minimize the businesses risks**
- **To minimize the cost of producing Good Quality Software**
- **To minimize Time to Market.**

The spectrum of Trace services is

- **Software testing**
- **Test Consultation**
- **Test Automation**

Trace Products are

- **LoadTracer-** a load and performance testing tool
- **Tracer-** an effective tool for the automation of functional and regression testing.
- **Tracktest-** a complete web based test management tool

For more information call 91-44-55628574 / 9444160581
Or visit our Web site at: www.tracet.net